



Government
Digital & Data

Understanding APIs in Government

Chris Nesbitt-Smith | cns.me [CDDO]



Chris Nesbitt-Smith | cns.me [CDDO]



- **What**
- **How**
- **When**
- **Where**
- **Why**
...an **API**



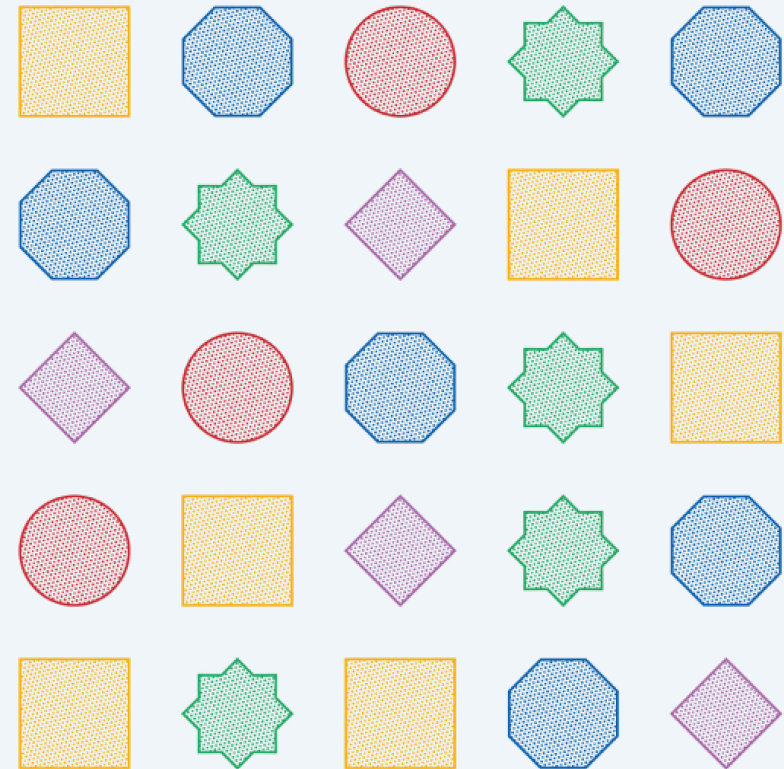
Platformland:

An anatomy of next-generation public services

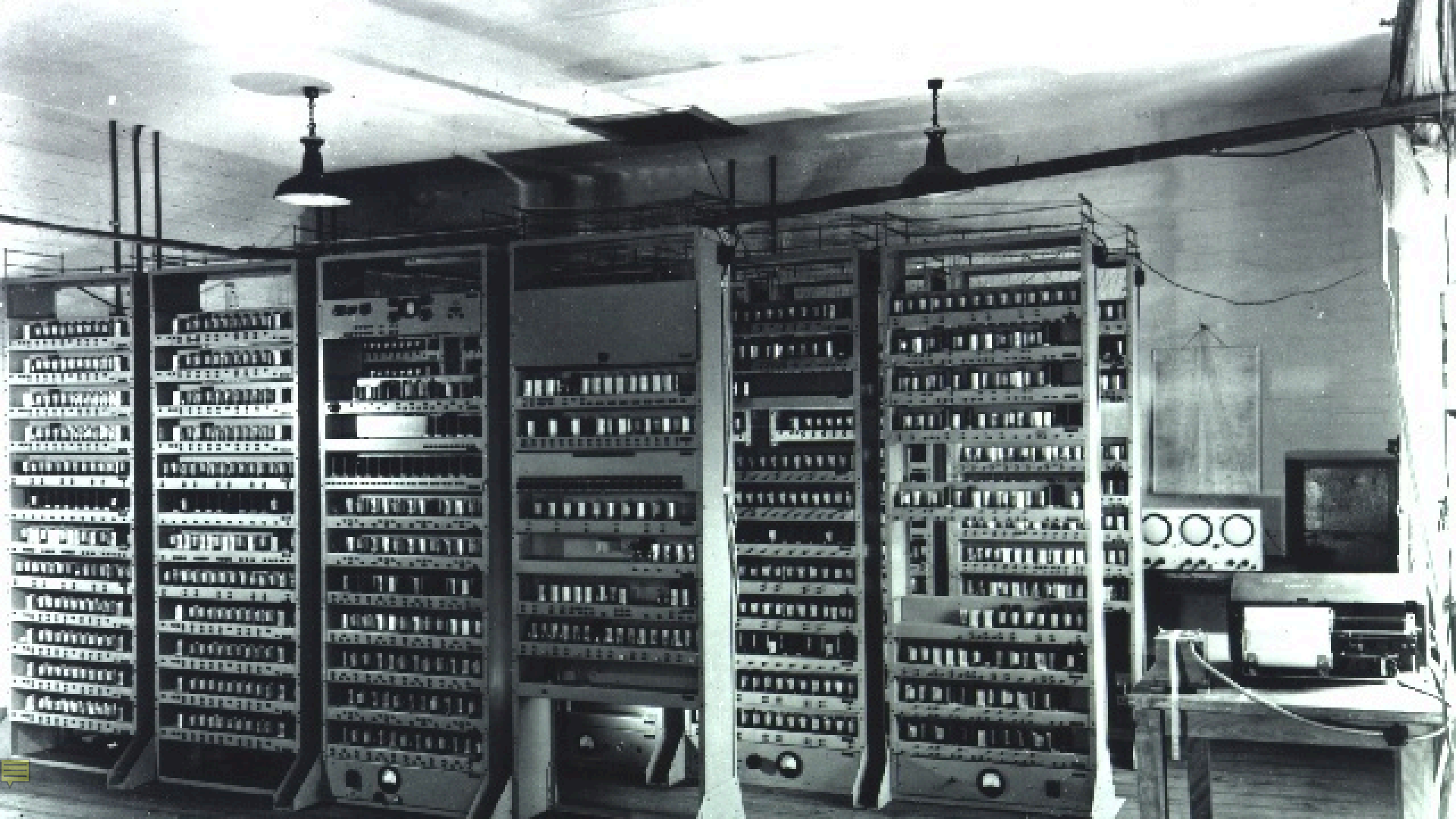
anatomyofpublicservices.com

PLATFORMLAND

An anatomy of next-generation public services



Richard Pope



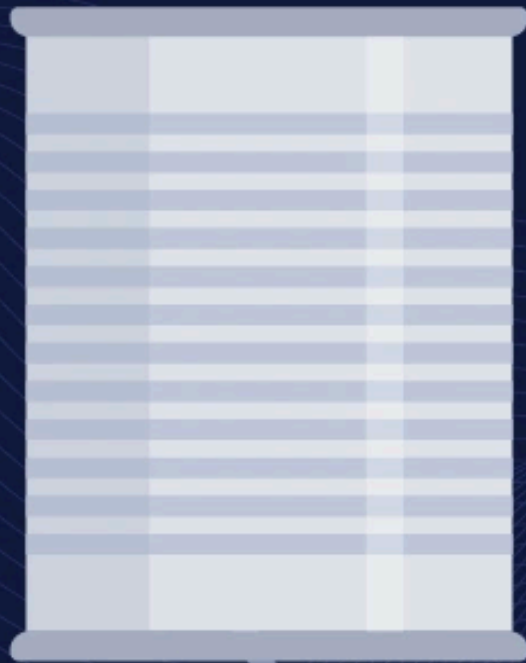
CONTRACT

THIS AGREEMENT made this _____ day of _____, 20____

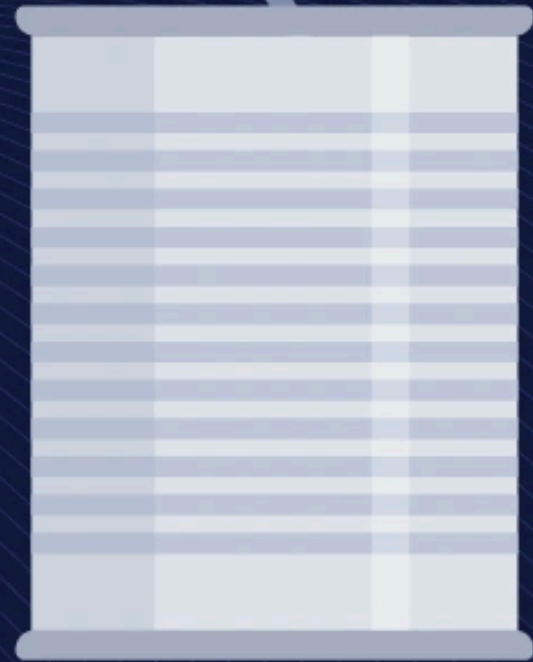
by _____
and between _____
and _____

WITNESSETH: That in consideration _____
kept and performed on the part of _____
I. Said party of _____
_____ covenants and agreements to be
_____ (First Party)
_____ (Second Party),
_____ and agrees that it shall:
_____ respectively as herein stated.



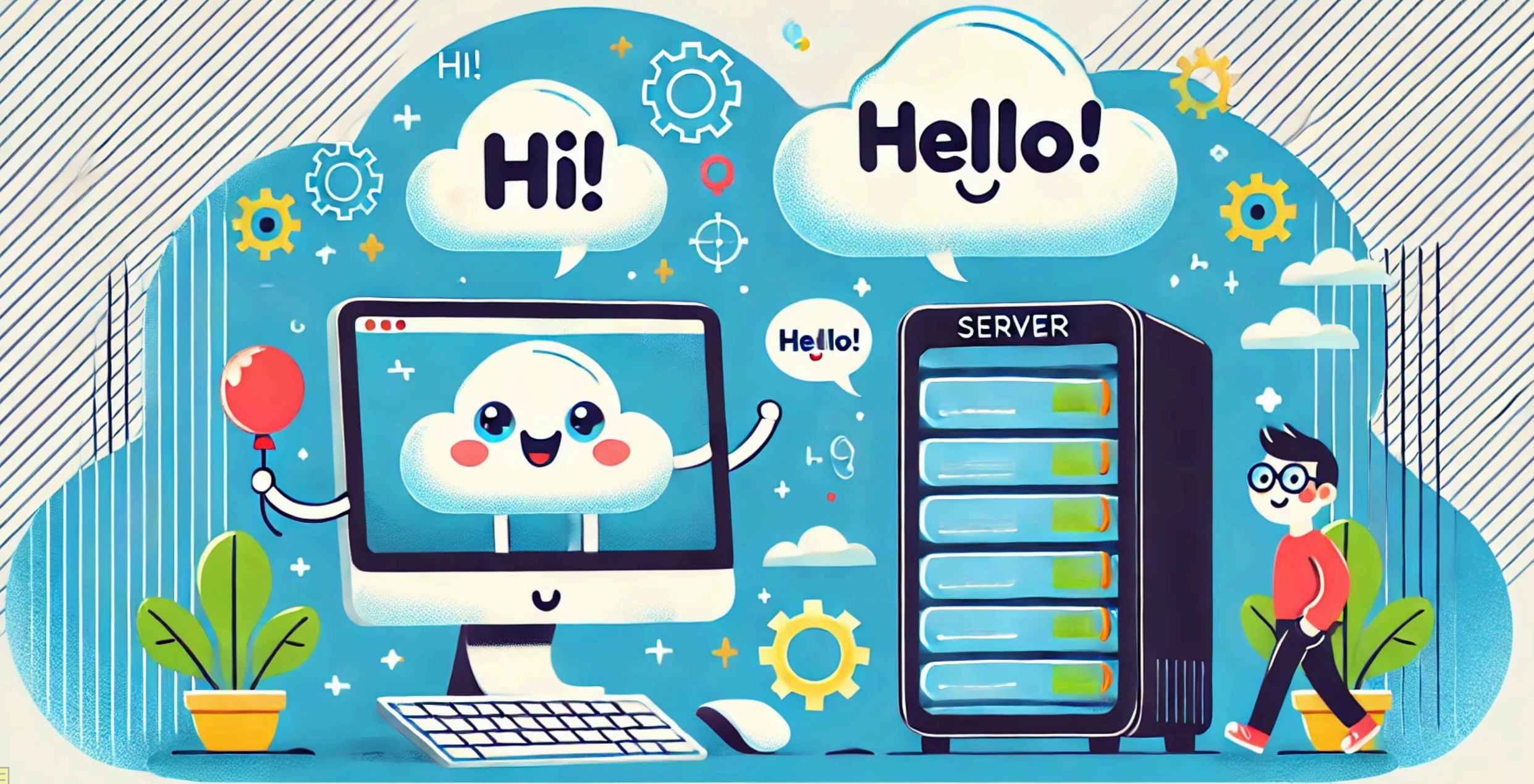


API



Key Concepts





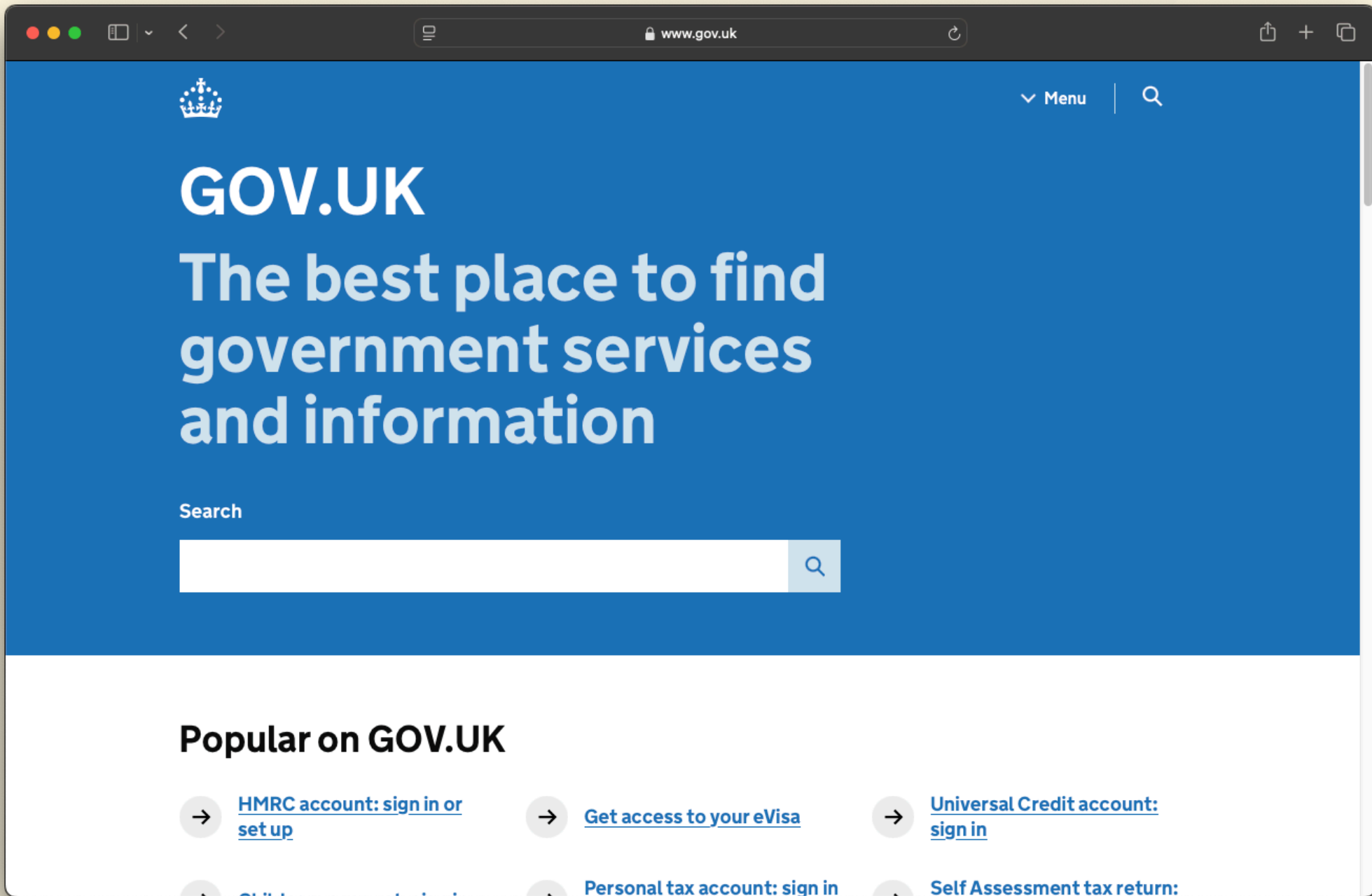
Hi!

Hi!

Hello!

Hello!

SERVER



Menu



GOV.UK

The best place to find government services and information

Search



Popular on GOV.UK

→ [HMRC account: sign in or set up](#)

→ [Get access to your eVisa](#)

→ [Universal Credit account: sign in](#)

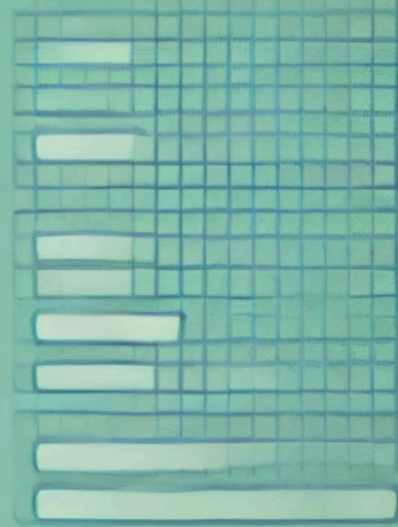
→ [Personal tax account: sign in](#)

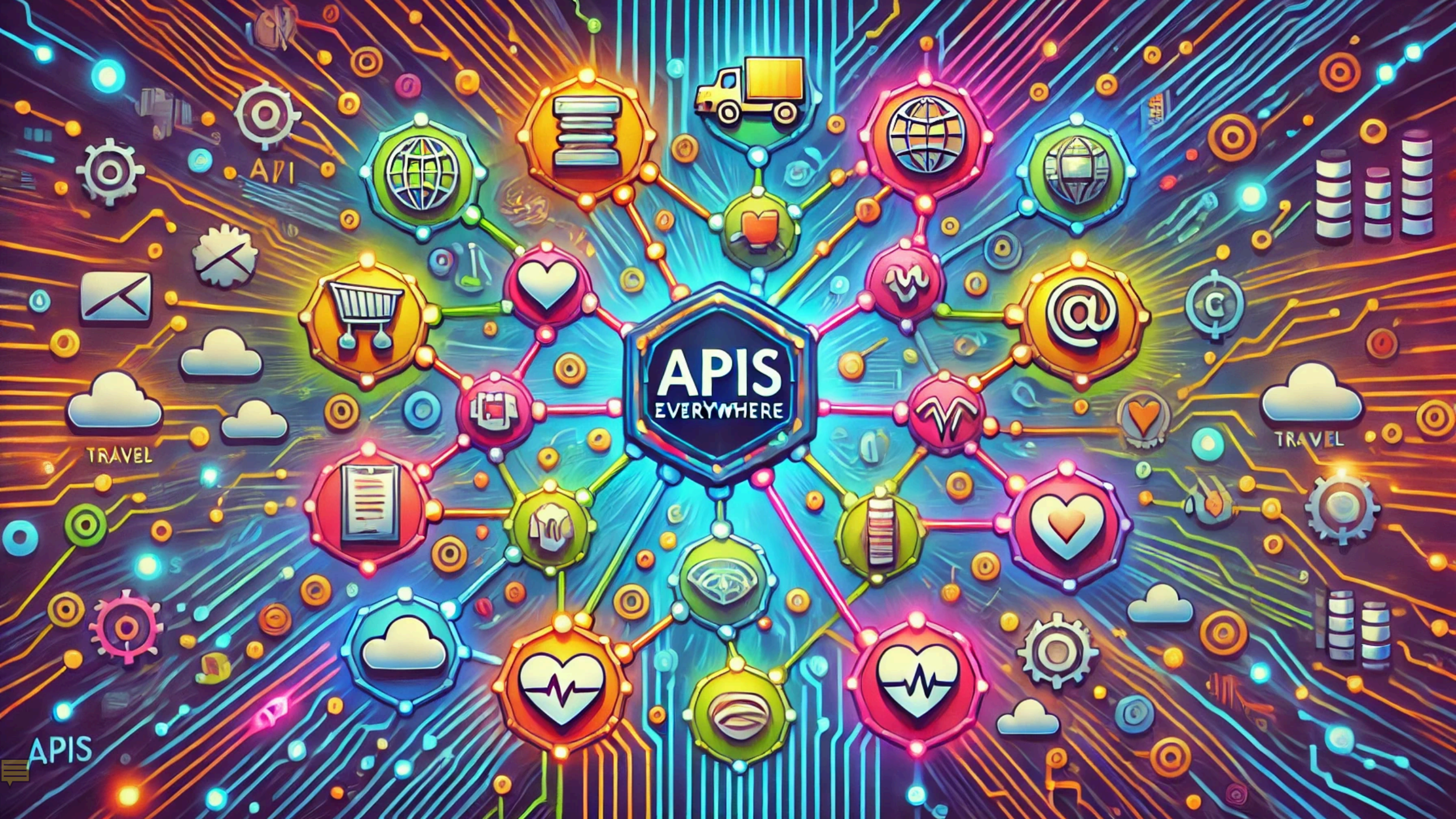
→ [Self Assessment tax return:](#)



CONTACT FORM
FORM
FORM

Contact Form
Taken a bequest
Request
Contact Form
ire submitted





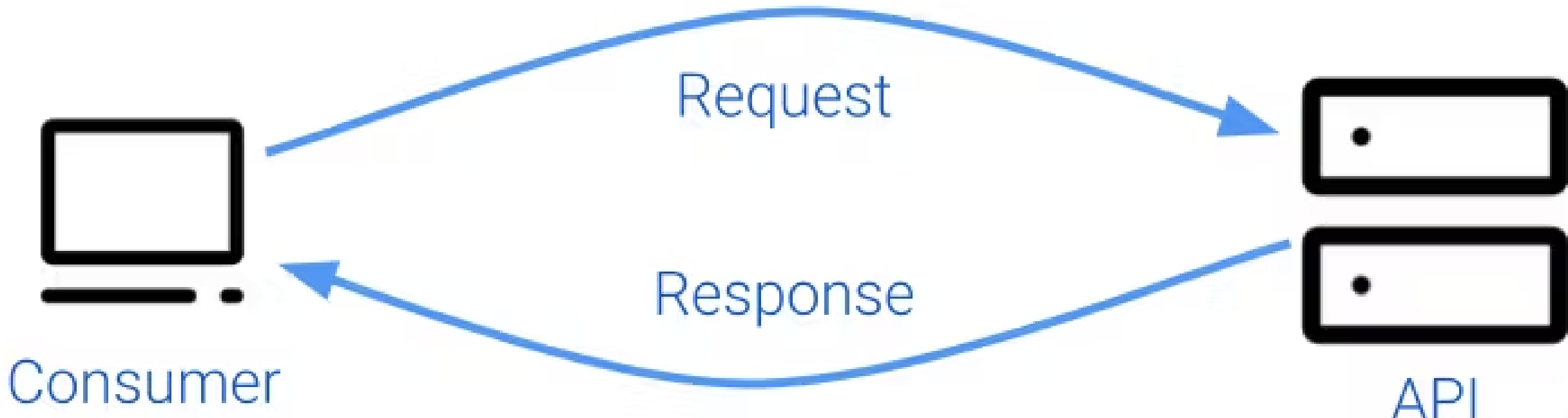
APIS
EVERYWHERE

API

TRAVEL

TRAVEL

APIS



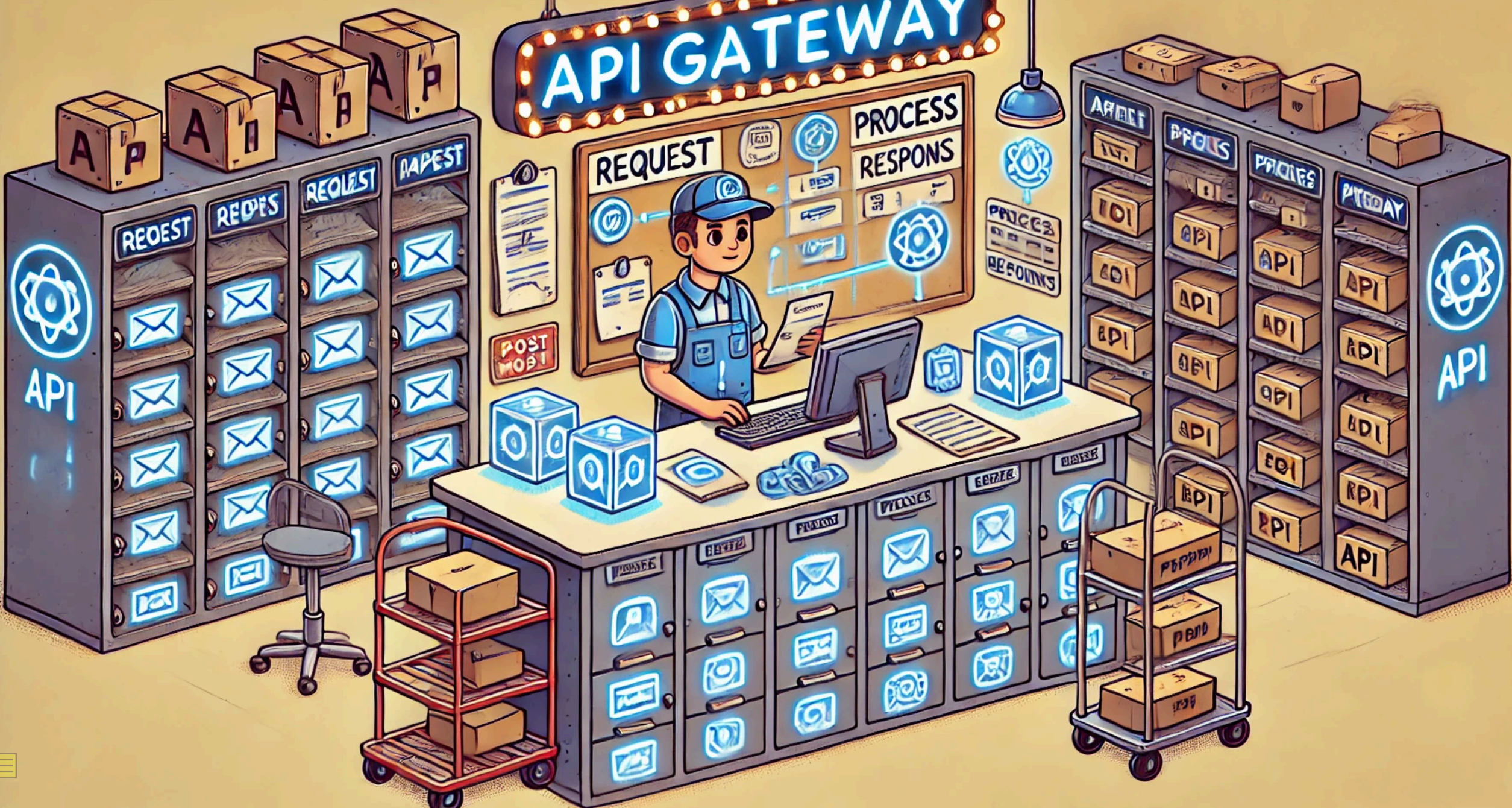
Endpoint

e.g. <https://api.gov.uk/v1>





API GATEWAY



Types of APIs



RPC (Remote Procedure Call)

SOAP (Simple Object Access Protocol)



REST

(Representational State Transfer)



GraphQL



Data Formats



JSON (JavaScript Object Notation)

```
{  
  "name": "John",  
  "age": 30,  
  "city": "New York",  
  "children": [  
    {  
      "name": "Jane",  
      "age": 5  
    }  
  ]  
}
```



XML (eXtensible Markup Language)

```
<Person>
  <Name>John</Name>
  <Age>30</Age>
  <City>New York</City>
  <Children>
    <Child>
      <Name>Jane</Name>
      <Age>5</Age>
    </Child>
  </Children>
</Person>
```



CSV (Comma-Separated Values)

```
Name, Age, City  
John, 30, New York
```

```
ParentName, ChildName, ChildAge  
John, Jane, 5
```



Plain Text

John is thirty years old and lives in New York,
he has a child named Jane who is five years old.

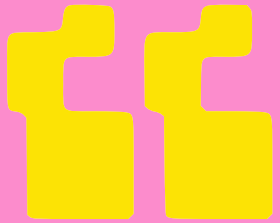




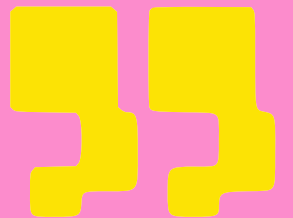
The end of the abstract jargon

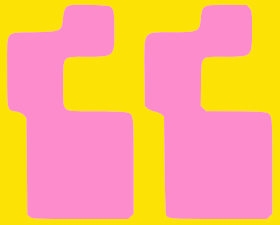
How Companies Use APIs



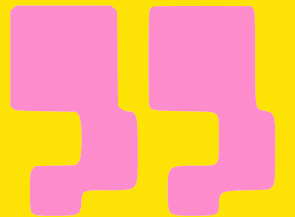


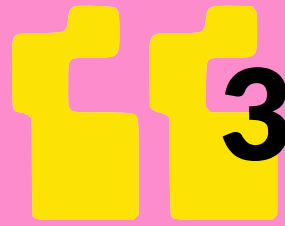
1. All teams will henceforth expose their data and functionality through service interfaces.





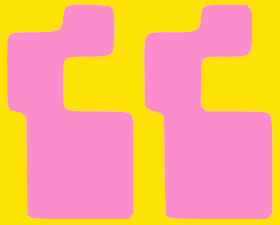
2. Teams must communicate with each other through these interfaces.



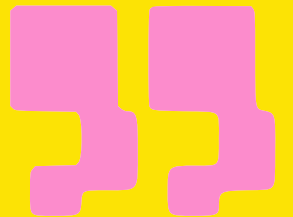


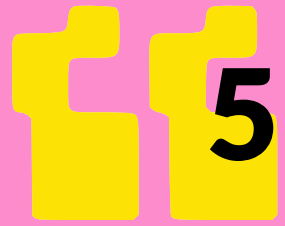
3. There will be no other form of interprocess communication allowed: no direct linking, no direct reads of another team's data store, no shared-memory model, no back-doors whatsoever. The only communication allowed is via service interface calls over the network



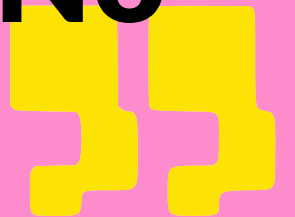


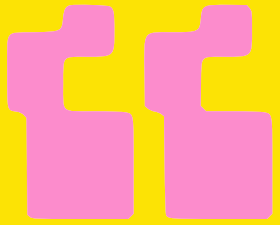
4. It doesn't matter what technology they use. HTTP, Corba, Pubsub, custom protocols – doesn't matter.



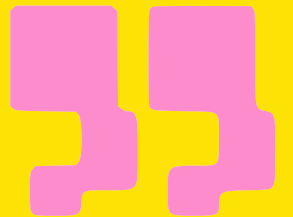


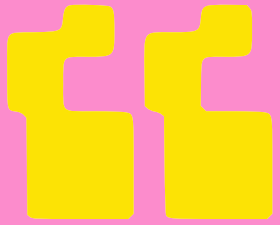
5. All service interfaces, without exception, must be designed from the ground up to be externalizable. That is to say, the team must plan and design to be able to expose the interface to developers in the outside world. No exceptions.



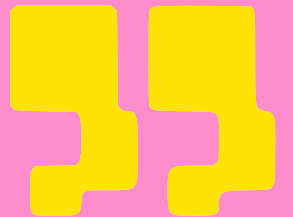


6. Anyone who doesn't do this will be fired.





7. Thank you; have a nice day!

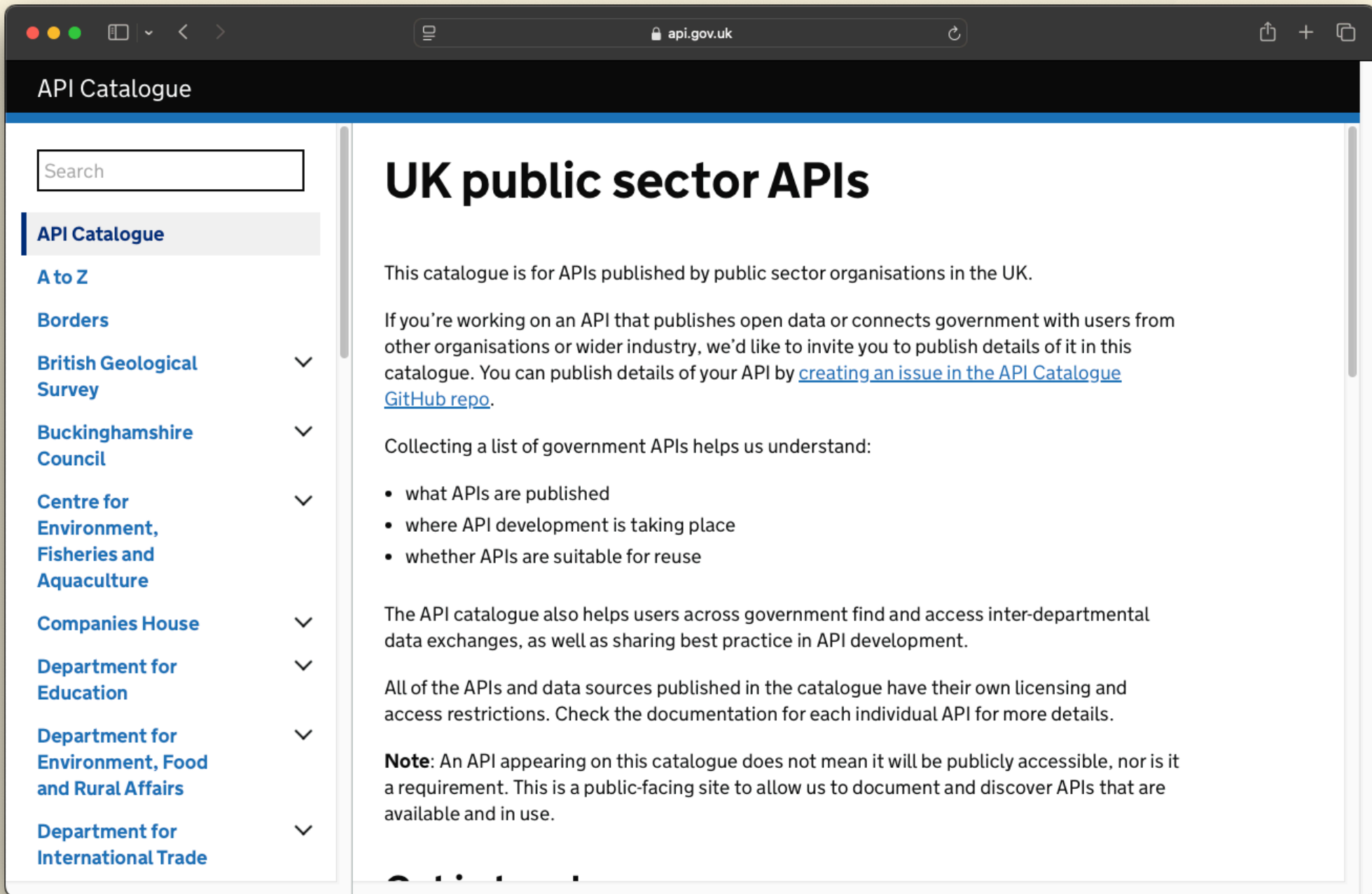


Government and APIs



Data Sharing





API Catalogue

A to Z

Borders

British Geological Survey

Buckinghamshire Council

Centre for Environment, Fisheries and Aquaculture

Companies House

Department for Education

Department for Environment, Food and Rural Affairs

Department for International Trade

UK public sector APIs

This catalogue is for APIs published by public sector organisations in the UK.

If you're working on an API that publishes open data or connects government with users from other organisations or wider industry, we'd like to invite you to publish details of it in this catalogue. You can publish details of your API by [creating an issue in the API Catalogue GitHub repo.](#)

Collecting a list of government APIs helps us understand:

- what APIs are published
- where API development is taking place
- whether APIs are suitable for reuse

The API catalogue also helps users across government find and access inter-departmental data exchanges, as well as sharing best practice in API development.

All of the APIs and data sources published in the catalogue have their own licensing and access restrictions. Check the documentation for each individual API for more details.

Note: An API appearing on this catalogue does not mean it will be publicly accessible, nor is it a requirement. This is a public-facing site to allow us to document and discover APIs that are available and in use.

<https://data.police.uk/api/metropolitan/E05009386/events>

```
[
  {
    "contact_details": {},
    "description": "<p>A one-to-one consultation session
in conjunction with property marking.</p>",
    "end_date": "2024-12-11T15:00:00",
    "title": "Property Marking Scheme",
    "address": "Bike Marking and Phone Marking
schemes @ Lauriston Road, E9 (Opposite Fish House)",
    "type": "meeting",
    "start_date": "2024-12-11T13:30:00"
  },
]
```





Bin Collection Days
● Bank holiday or
● strike adjustment

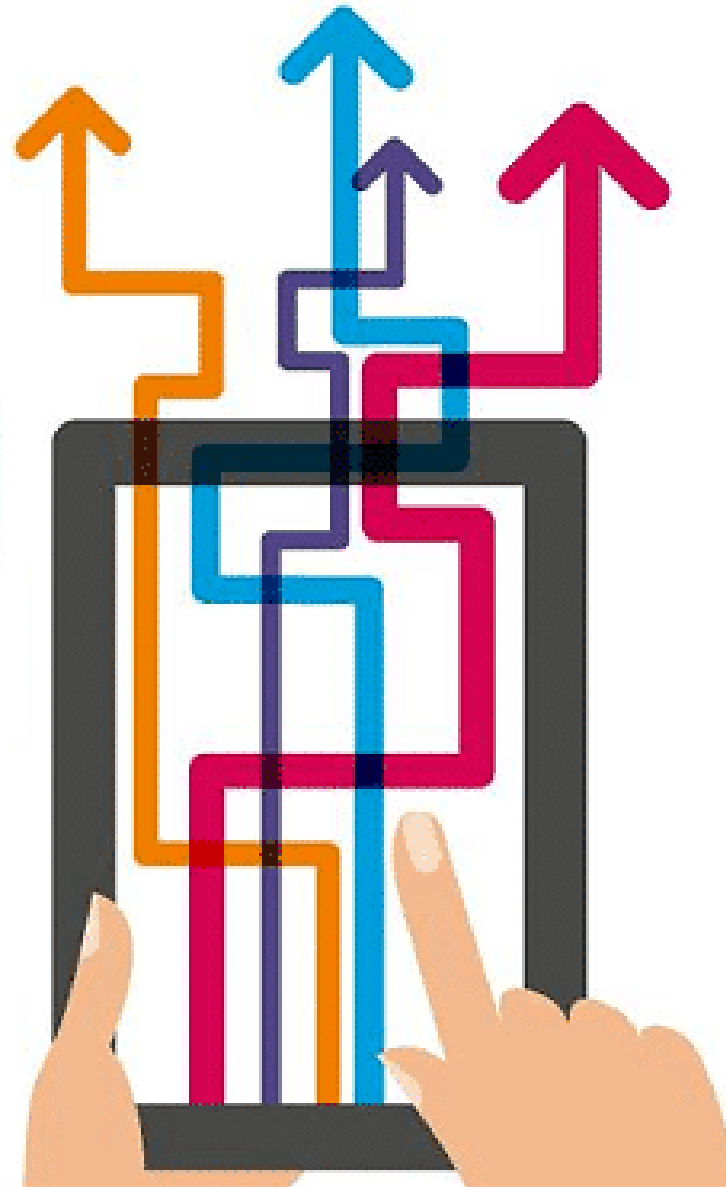
API

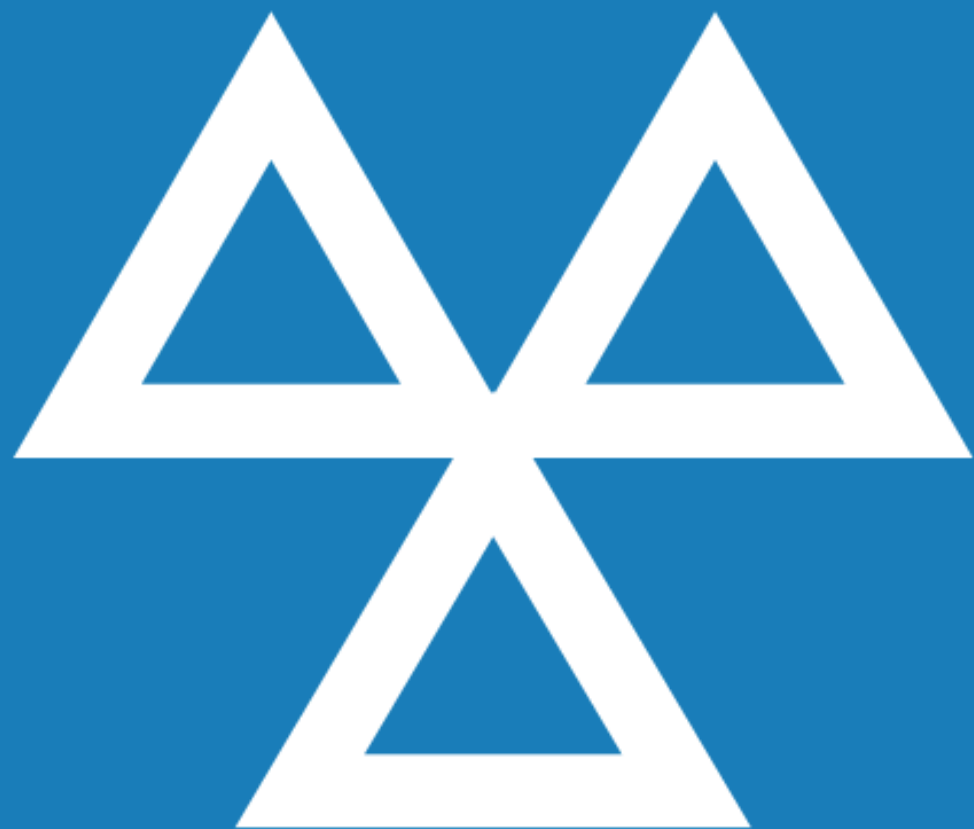




HM Revenue
& Customs

Making tax digital





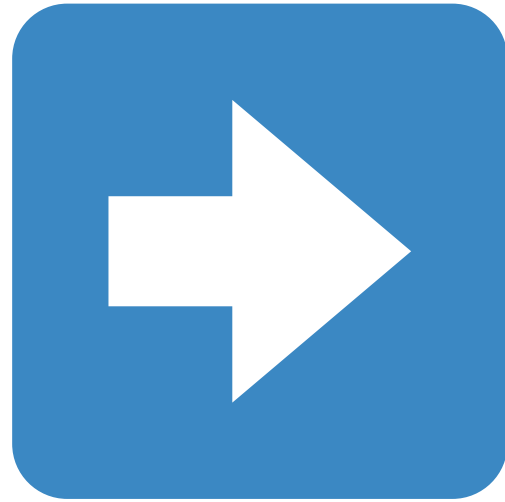


Future of Public Services



One Government





APIs in Government Today


DVLA

- **Photo at the Roadside enquiry API service**
- **Provide DVSA a service to check theory test eligibility.**
- **Digitise paper-based prosecutions with HMCTS**



find-and-use-an-api.education.gov.uk

GOV.UK uses cookies to make the site simpler. [Find out more about cookies](#)

 Department for Education | Find and Use an API Overview APIs Applications Support

ALPHA This is a new service - your [feedback](#) will help us to improve it. [Create an account](#) [Sign in](#)

Find and Use an API

Connect to the Department for Education (DfE) digital services through our APIs.

[Create an account](#) or [sign in](#) to the Find and Use an API service.

Browse DfE APIs

You can browse [public APIs](#) from different sectors including schools, finance and corporate entities.

Department for Education

APIs

Example API 1	REST API
Example API 2	REST API
Example API 3	REST API
Example API 4	REST API
Example API 5	REST API





Challenges?



Key points:

- **Essential building blocks for modern digital services**
- **Seamless data sharing and reduce duplication**
- **Strategic asset, not just a technical tool**
- **More integrated citizen experiences**



> EOM

(end of message)



digitalpeople.blog.gov.uk/2024/09/17 /get-cloud-certified-this-autumn

Get Cloud Certified this Autumn - applications now closed!

[Martin Turner](#), Senior Change Delivery Manager, CDDO, 17 September 2024 - [Capabilities](#), [Community](#), [Digital data and technology](#), [Government Digital and Data](#), [Skills and Learning](#), [Training and progression](#)

Introduction

Following the remarkable success of last October's [Get Cloud Certified programme](#), the Central Digital and Data Office (CDDO) is pleased to announce the return of the programme, now featuring an expanded range of innovative training opportunities with a range of different cloud providers.



🙏 Thanks 🙏

- cns.me | talks.cns.me
- Platformland by Richard Pope
- Government as a Platform by Tim O'Reilly
- api.gov.uk

Chris Nesbitt-Smith



Q&A

